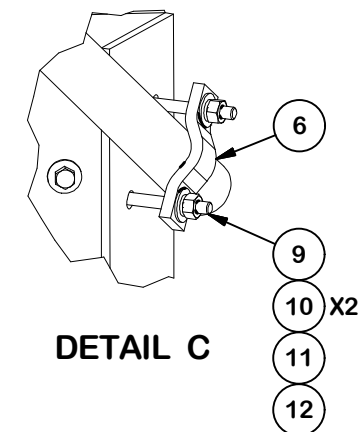
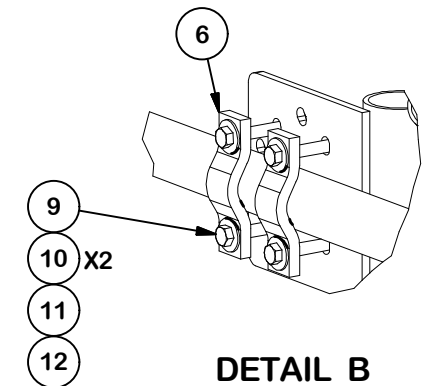
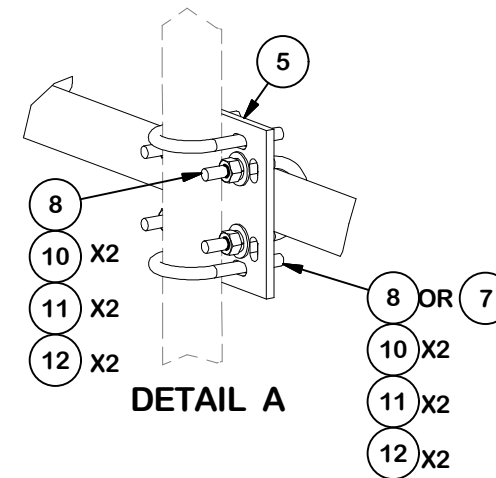


PARTS LIST						
ITEM	QTY	PART NO.	PART DESCRIPTION	LENGTH	UNIT WT.	NET WT.
1	2	X-TP50	TALL BASE WELDMENT FOR TP1 ONE-SECTOR TRIPOD		89.24	178.48
2	1	X-TP25	SHORT BASE WELDMENT FOR TP1 ONE-SECTOR TRIPOD		42.71	42.71
3	2	P2126	2-3/8" X 126" (2" SCH. 40) GALVANIZED PIPE	126 in	40.75	81.50
4	2	P2120	2-3/8" x 120" (2" SCH. 40) GALAVANIZED PIPE	120 in	38.81	77.62
5	8	SCX2	CROSSOVER PLATE	7 in	4.80	38.37
6	14	SCP	CLAMP HALF, 1/2" x 5-3/4"		1.29	18.10
7	16	X-UB1300	1/2" X 3" X 5" X 2" U-BOLT (HDG.)		0.70	11.15
8	32	X-UB1212	1/2" X 2-1/2" X 4-1/2" X 2" U-BOLT (HDG.)		0.63	20.00
9	28	G1204	1/2" x 4" HDG HEX BOLT GR5 FULL THREAD	4 in	0.27	7.56
10	120	G12FW	1/2" HDG USS FLATWASHER	3/32 in	0.03	4.09
11	92	G12LW	1/2" HDG LOCKWASHER	1/8 in	0.01	1.28
12	92	G12NUT	1/2" HDG HEAVY 2H HEX NUT		0.07	6.59
					TOTAL WT. #	487.46



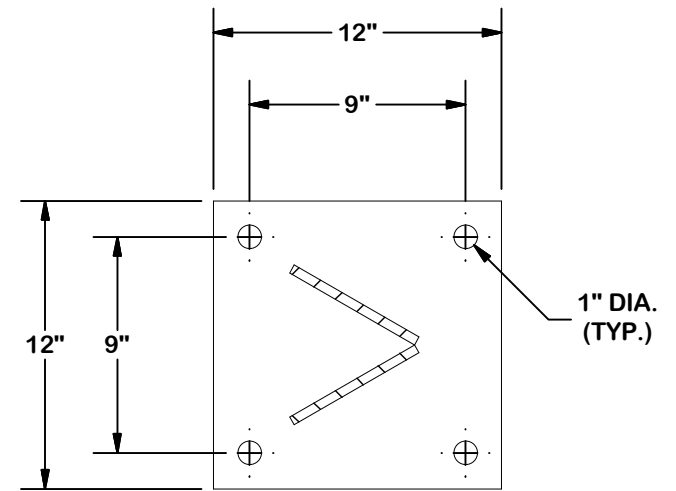
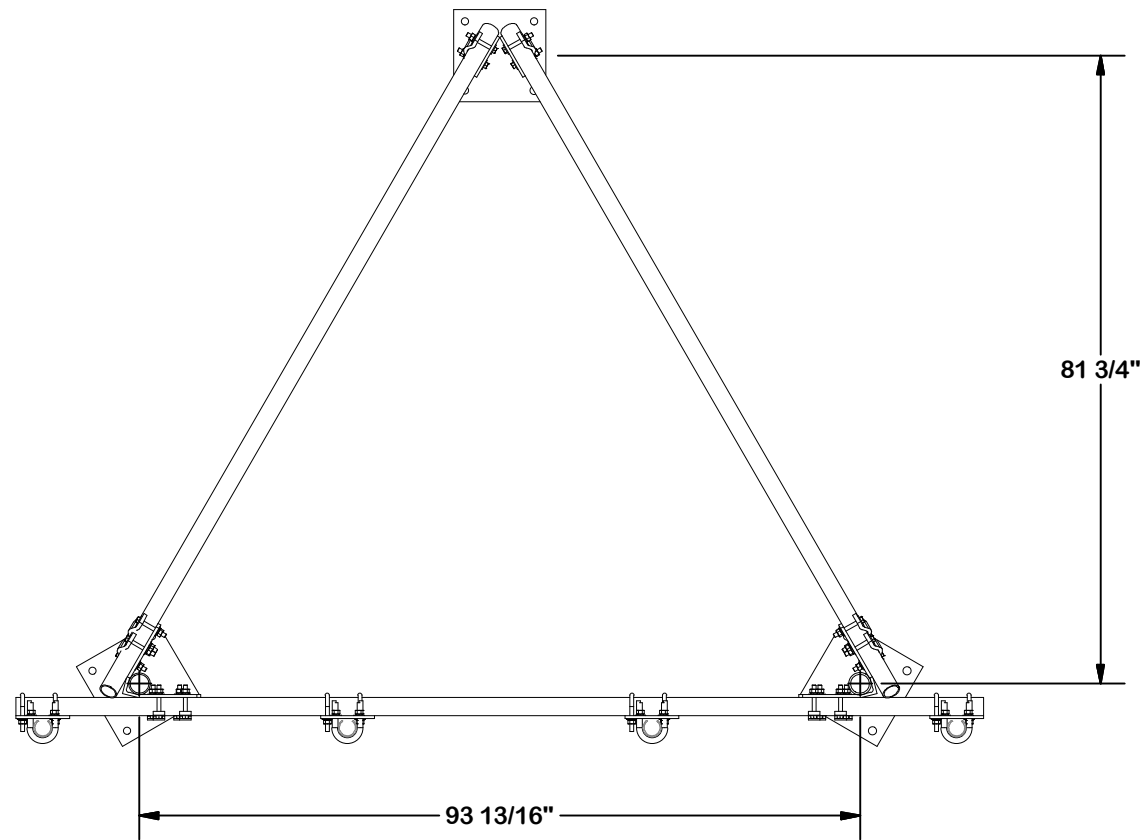
TOLERANCE NOTES

TOLERANCES ON DIMENSIONS, UNLESS OTHERWISE NOTED ARE:
SAWED, SHEARED AND GAS CUT EDGES ($\pm 0.030"$)
DRILLED AND GAS CUT HOLES ($\pm 0.030"$) - NO CONING OF HOLES
LASER CUT EDGES AND HOLES ($\pm 0.010"$) - NO CONING OF HOLES
BENDS AND ANGLES ARE $\pm 1/2$ DEGREE
ALL OTHER MACHINING ($\pm 0.030"$)
ALL OTHER ASSEMBLY ($\pm 0.060"$)

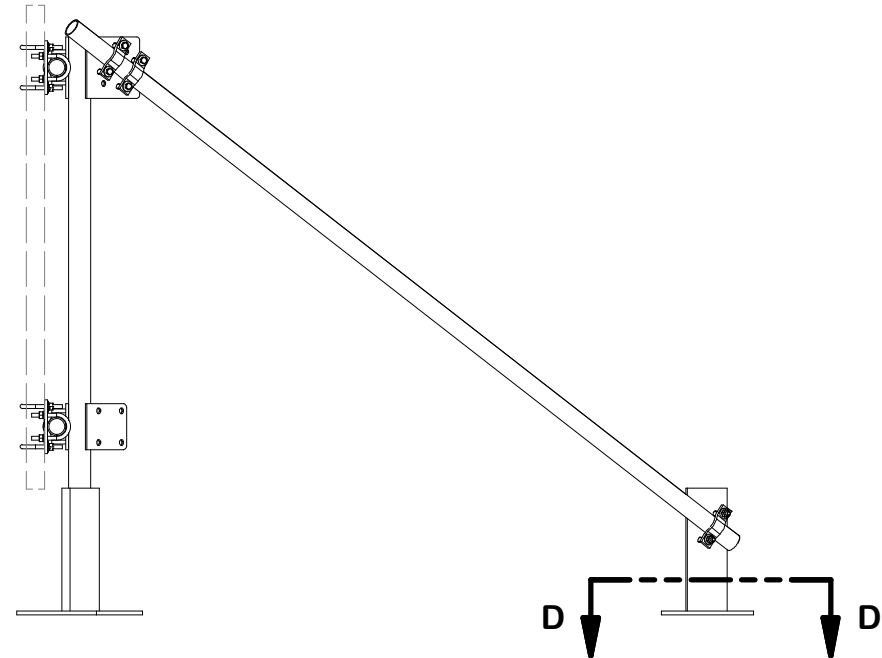
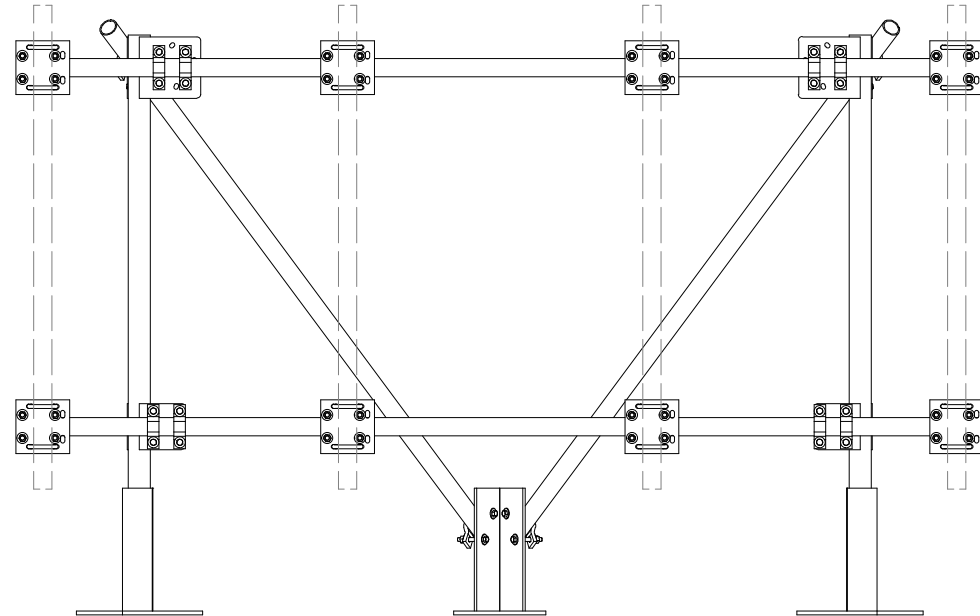
PROPRIETARY NOTE:
THE DATA AND TECHNIQUES CONTAINED IN THIS DRAWING ARE PROPRIETARY INFORMATION OF VALMONT INDUSTRIES AND CONSIDERED A TRADE SECRET. ANY USE OR DISCLOSURE WITHOUT THE CONSENT OF VALMONT INDUSTRIES IS STRICTLY PROHIBITED.

DESCRIPTION			
PENETRATING ROOFTOP MOUNT WITH 10' 6" FACE			
CPD NO.	DRAWN BY	ENG. APPROVAL	
	CEK 8/11/2019		
CLASS	SUB	DRAWING USAGE	CHECKED BY
81	01	CUSTOMER	BMC 8/21/2019

SITE PRO 1 A valmont COMPANY		Locations: New York, NY Atlanta, GA Los Angeles, CA Plymouth, IN Salem, OR Dallas, TX Tampa, FL
Engineering Support Team: 1-888-753-7446		
PART NO.	TP1-10	
DWG. NO.	TP1-10	



SECTION D-D



TOLERANCE NOTES

TOLERANCES ON DIMENSIONS, UNLESS OTHERWISE NOTED ARE:
SAWED, SHEARED AND GAS CUT EDGES ($\pm 0.030"$)
DRILLED AND GAS CUT HOLES ($\pm 0.030"$) - NO CONING OF HOLES
LASER CUT EDGES AND HOLES ($\pm 0.010"$) - NO CONING OF HOLES
BENDS AND ANGLES ARE $\pm 1/2$ DEGREE
ALL OTHER MACHINING ($\pm 0.030"$)
ALL OTHER ASSEMBLY ($\pm 0.060"$)

PROPRIETARY NOTE:
THE DATA AND TECHNIQUES CONTAINED IN THIS DRAWING ARE PROPRIETARY INFORMATION OF VALMONT INDUSTRIES AND CONSIDERED A TRADE SECRET. ANY USE OR DISCLOSURE WITHOUT THE CONSENT OF VALMONT INDUSTRIES IS STRICTLY PROHIBITED.

DESCRIPTION
**PENETRATING ROOFTOP MOUNT
WITH 10' 6" FACE**

CPD NO.		DRAWN BY CEK 8/11/2019		ENG. APPROVAL	
CLASS 81	SUB 01	DRAWING USAGE CUSTOMER		CHECKED BY BMC 8/21/2019	

SITE PRO 1
A valmont COMPANY

Engineering
Support Team:
1-888-753-7446

Locations:
New York, NY
Atlanta, GA
Los Angeles, CA
Plymouth, IN
Salem, OR
Dallas, TX
Tampa, FL

PART NO.		PAGE 2 OF 2
TP1-10		
DWG. NO.		
TP1-10		